

CASE TB2:

Periodontally involved molars, on both sides of the lower jaw.

Rt.side: extraction of 2 molars but only one was w/o root canal filling and it was transformed into autogenous dentin graft, for 2 molars socket preservation and augmentation. See the quality of bone and ridge level 2 years later.

Lt. side: Here 3 molars were extracted but only one molar was transformed into dentin for grafting. This graft filled 3 sockets (grinding produces 2-3 times of tooth volume). See the ridge bone level after one year.

Teeth #47;48 have to be extracted Due to periodontal disease



Figure number 1:
sectional DPT with
teeth #47;48 before
treatment

CaseTB2

Tooth #47 is discarded as contraindicated
to grafting because of RCT



Tooth #48 is now cleaned and preparing for grafting
After processing of the tooth by our procedure

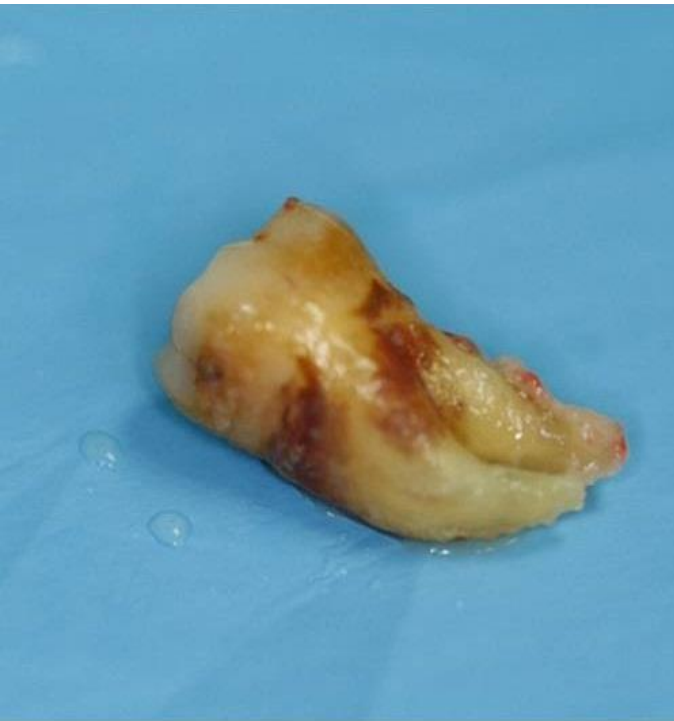


Figure number 2: the tooth
before mechanical cleaning



Figure number 3: the tooth after
mechanical cleaning

we get the ready graft at the
same session of extraction

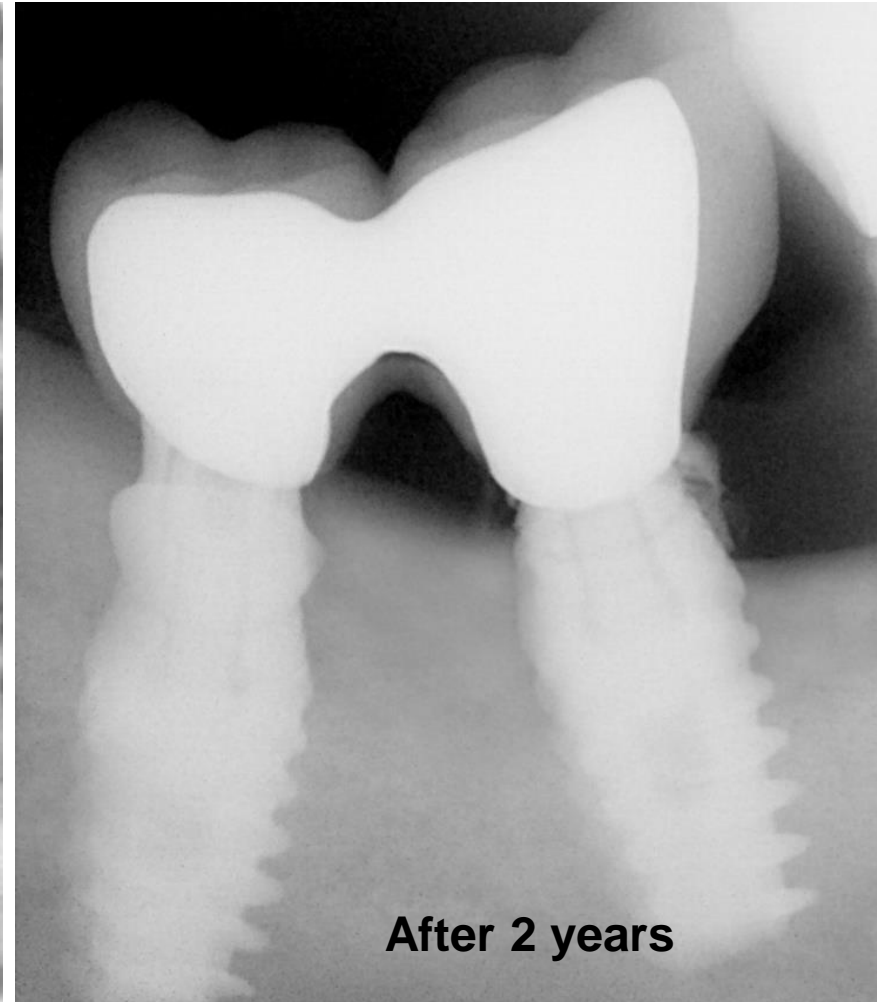
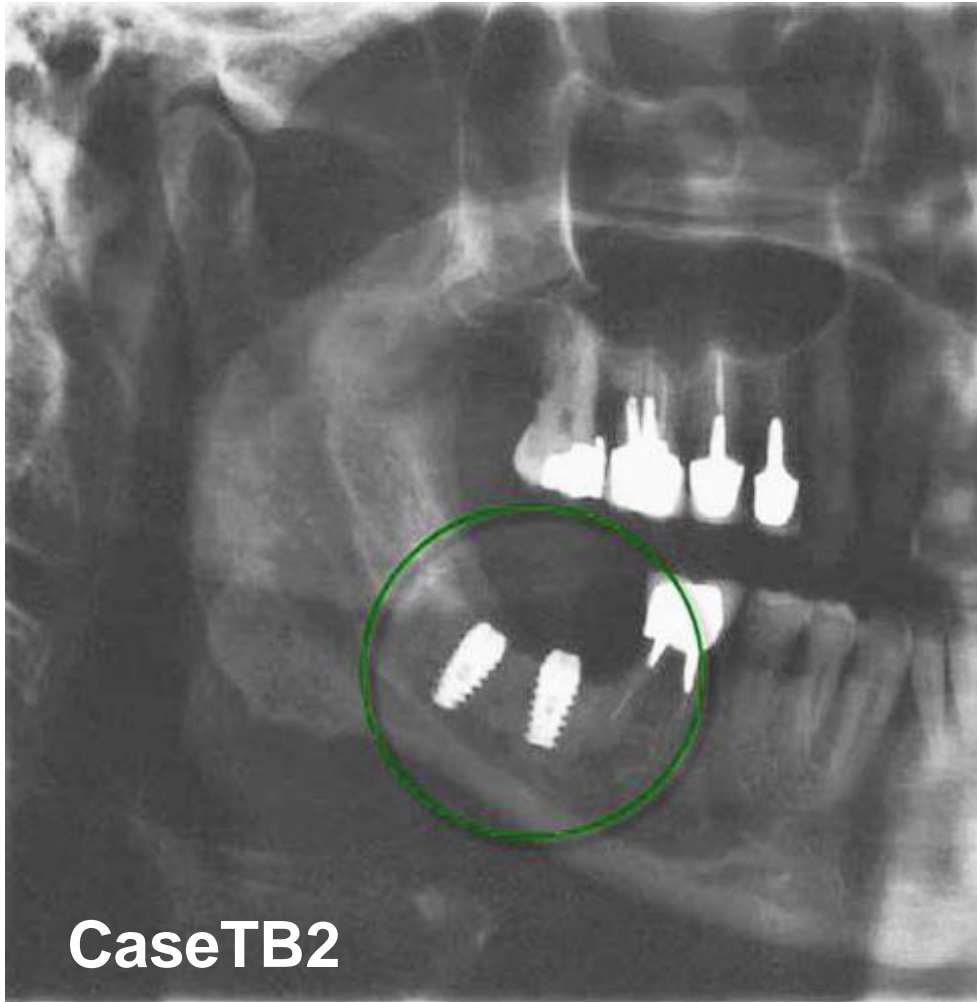


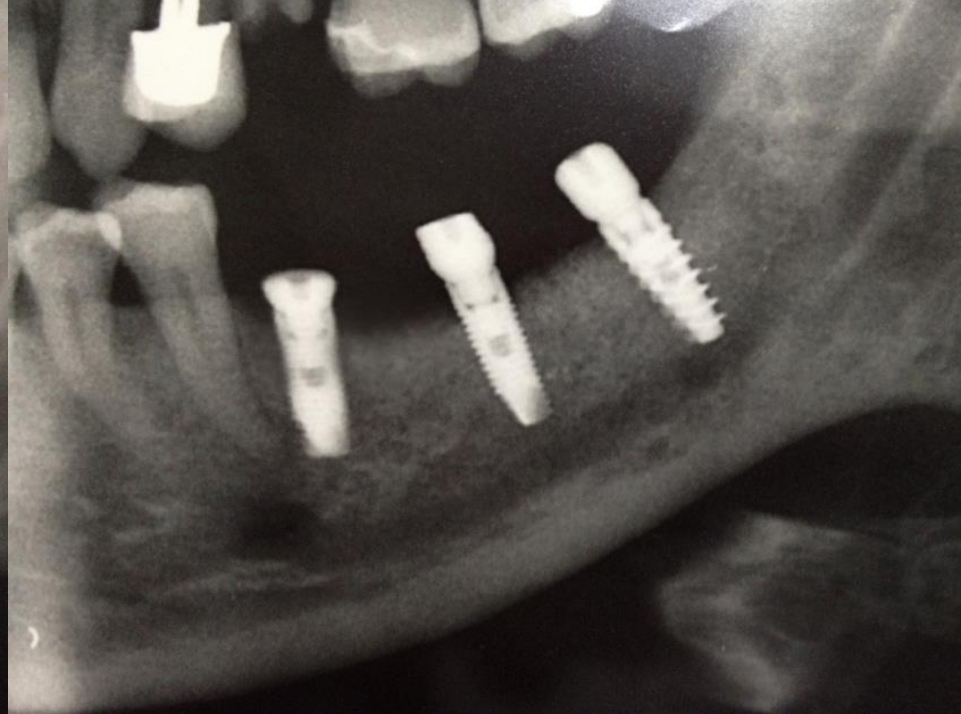
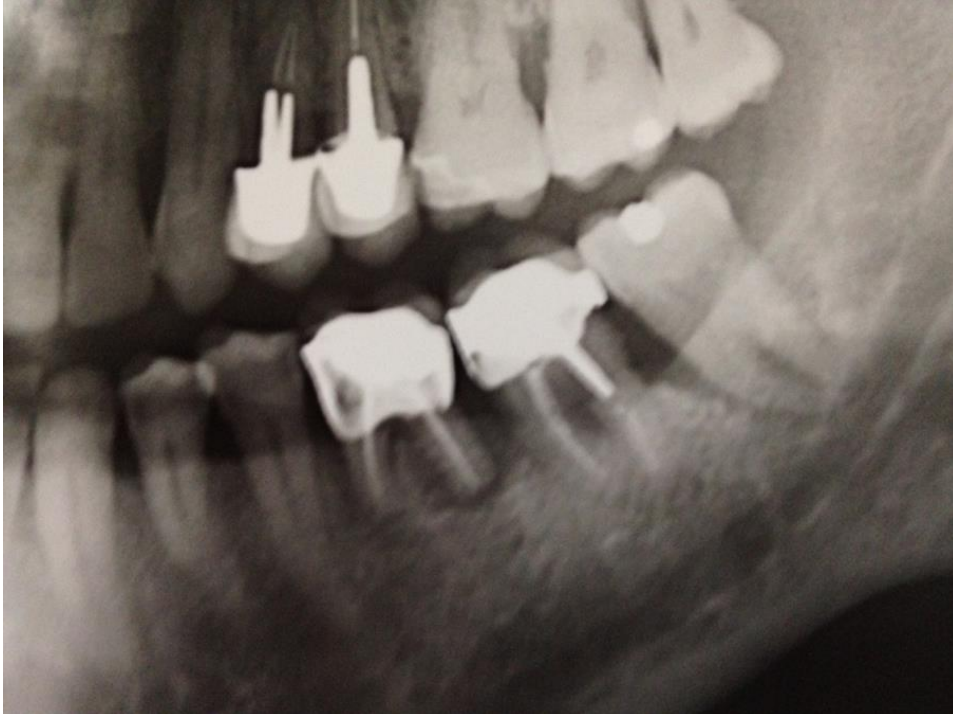
Figure number 4: ready
autogenic dentin graft.

CaseTB2

The sockets were filled with dentin and PRF membrane was placed.

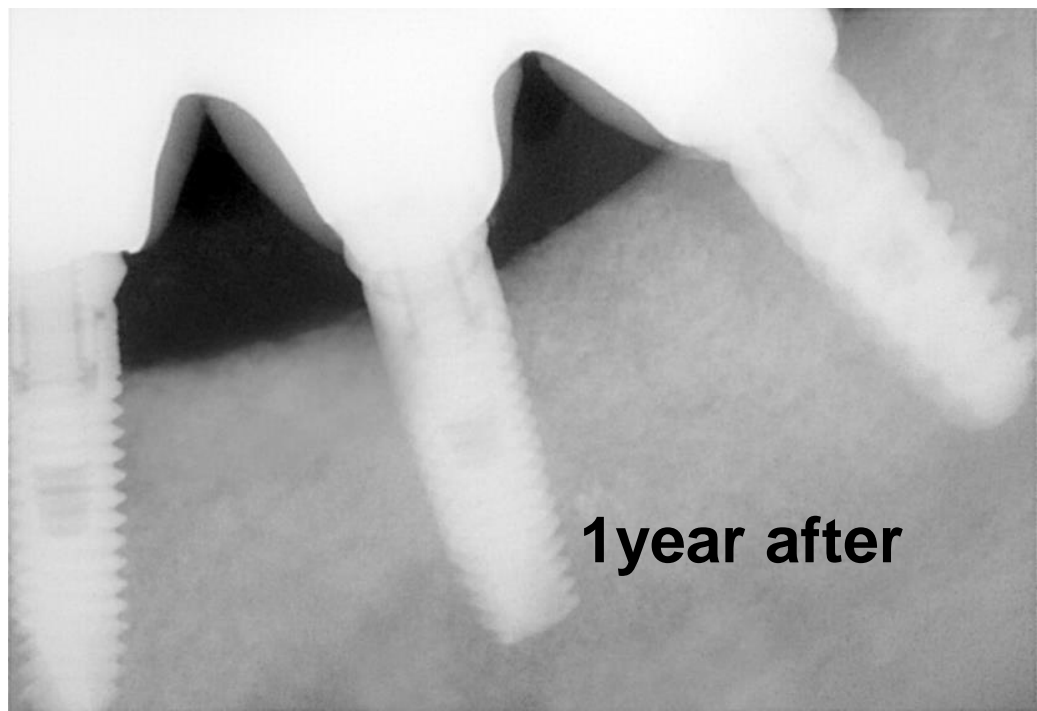
Implants were inserted 2 months after grafting.





Only one molar is available for grafting. Since the volume of one molar equals to X3 particle volume, it was enough to graft 3 sockets.

CaseTB2 left side



1year after